

Temperature & Humidity Measuring Instruments

- **THERMOMETER**
- **HUMIDITY & TEMP METER**

- Best for controlling and measuring humidity and temperature
- Easy to measure
- In conformance to CE



THERMOMETER (MODEL: TC-950) ▶

THERMOCOUPLE PROBES Sold separately
 Please refer to our catalog of Thermocouple probes.
 Thermocouple probes are not included with TC-950

HUMIDITY & TEMP METER (MODEL: TH-3000)



SOFTWARE FOR TC-950 (MODEL:USB-K) Sold separately

This software has very simple User Interface that makes it easy to use. With the software you will be able to graphically see the data from the TC-950. You can customize the Graph Range, Alarm Values as well as other options available. Data from the TC-950 can be saved in a(CSV) format where database software easily access.

Specifications

THERMOMETER (MODEL:TC-950)

General Specifications	
Probe Input Socket	1
Sensor Type	Thermocouple K, J, T, E, R (Selected by button Switch)
Measuring Range	K : -100.0 - +1300.0°C J : -100.0 - +1150.0°C T : -100.0 - + 400.0°C E : -100.0 - + 900.0°C R : 0 - +1700 °C
Sampling Time	Approx. 1 Second.
Function	Data hold , MAX/MIN hold , Relative display
Display	LCD Display: 51mm x 32mm , Digit Size: 15mm
Input Connection	Miniature connector for thermocouple
Data Output	RS-232 PC Serial interface
Power Supply	LR03 (1.5V) battery x 6 pcs.
Power Consumption	11mA Max.
Operating Temp./Humidity	0 - 50°C Less than 80%RH
Dimensions / Weight	202 (W) x 68 (H) x 30 (D) mm approx. 290g (Including Battery)
Accessories	LR03 (1.5V) battery x 6pcs., Instruction Manual

Electrical Specifications			
Sensor Type	Resolution	Range	Accuracy
Type K	0.1°C	- 100.0 - - 50.1°C	± (0.2% +1 °C)
		- 50.0 - +1300.0°C	± (0.2% +0.5°C)
Type J	0.1°C	- 100.0 - - 50.1°C	± (0.2% +1 °C)
		- 50.0 - +1150.0°C	± (0.2% +0.5°C)
Type T	0.1°C	- 100.0 - - 50.1°C	± (0.2% +1 °C)
		- 50.0 - + 400.0°C	± (0.2% +0.5°C)
Type E	0.1°C	- 100.0 - - 50.1°C	± (0.2% +1 °C)
		- 50.0 - + 900.0°C	± (0.2% +0.8°C)
Type R	1°C	0 - + 600 °C	± (1 % +5 °C)
		+601 - +1700 °C	± (1.5% +5 °C)

(Note) *Thermocouple probes are not included with TC-950.
*Please refer to Thermocouple probes catalog to choose the best model for your application.

HUMIDITY & TEMP METER (MODEL:TH-3000)

General Specifications	
Sensor Type	Humidity - High Precision Thin Film Capacitance Sensor Temperature - Thermistor
Sampling Time	Approx. 0.8 Second.
Measuring Function	Temperature and Humidity
Display	LCD Display: 51mm x 32mm , Digit Size: 15mm
Data Output	RS-232 PCSerial interface
Power Supply	LR03 (1.5V) battery x 6 pcs.
Power Consumption	10mA Max.
Operating Conditions	0°C - 50°C, Less than 80%RH
Dimensions / Weight	Unit : 200 (W) X 68 (H) X 30 (D) mm / Approx. 290g (Battery Included) Probe : φ 26mm x 200mm (Head: φ 15mm) / Approx. 80g
Accessories	Sensor Probe x 1pc., Battery x 6pcs., Operation Manual x 1pc.

Efficiency			
Function	Measuring Range	Resolution	Accuracy
Humidity	10% ~ 95% RH	0.1% RH	>70%RH6(3% of rdg+1%RH)
			< 70%RH6(3% RH)
Temperature	0°C ~ 50°C	0.1°C	±0.8°C

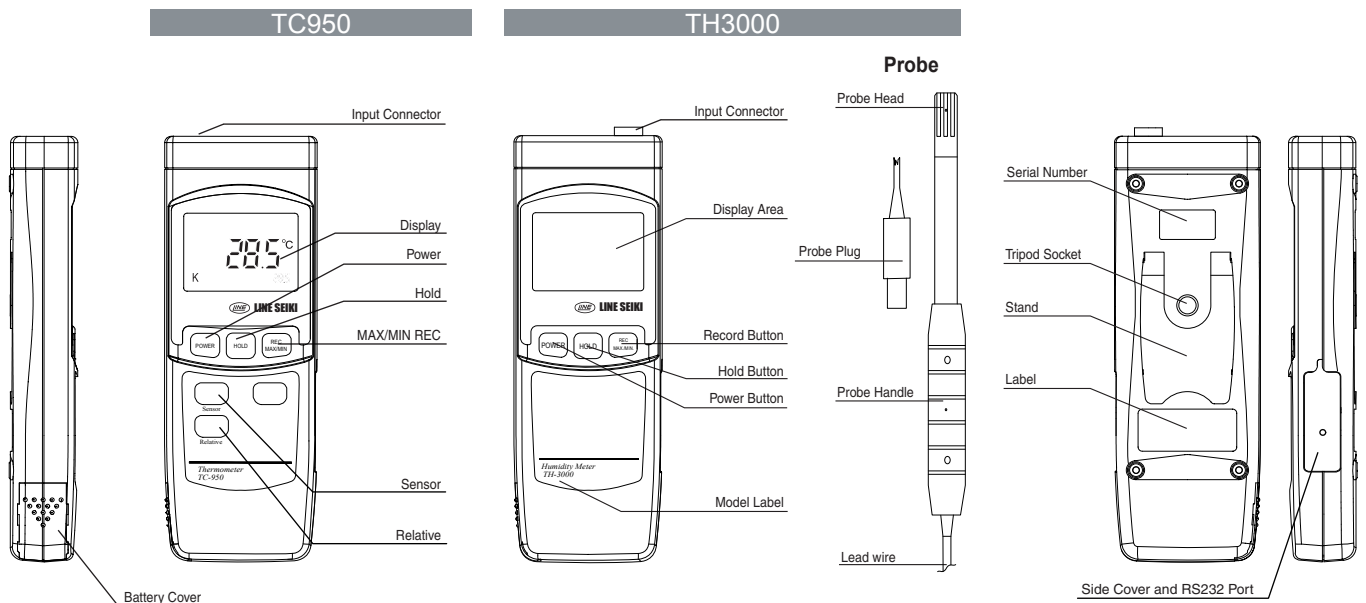
SOFTWARE FOR TC-950 (MODEL: USB-K) Sold separately	
Max Record Data	25,000 Data
Sampling Time	2~3,600 s
Output Data	CSV
Graph Customize	Graph range set, Alarm value set
System Minimum Requirements	OS: Windows XP/VISTA/7 VGA Display : 640 x 480 CD-ROM drive or DVD-ROM drive Visual Basic 6.0 Runtime / At least 32MB of memory
Contents	USB cable, instruction manual, Software for USB driver

This software is not guaranteed operate on all conditions.

Parts

Main Unit Front View

Main Unit Back View



LINE SEIKI CO., LTD.

Address: 37-7 Chuo-cho, 2-Chome Meguro-ku, Tokyo 152-0001 Japan
Contact : Tel : +81-3-37165151 Fax : +81-3-37104552
E-mail : webtrade@line.co.jp Web: http://www.line-seiki.com

This catalog was last revised as of May. 24, 2012.
*Specifications Subject to Change Without Notice.
All Rights Reserved, Copyright©2012 , LINE SEIKI CO., LTD.

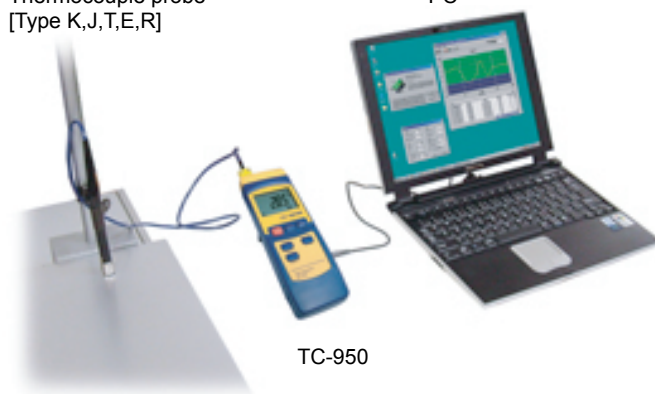
■ **Software for TC-950** □ (Sold separately)

Everyone can collect data and manage easily.

The software has a very simple User Interface that makes it easy to use.
 With the software you will be able to graphically see the data from the TC-950.
 You can customize the Graph Range, Alarm Values as well as other options available.
 Data from the TC-950 can be saved in a (CSV) format where database software can easily access.

Thermocouple probe
 [Type K,J,T,E,R]

PC

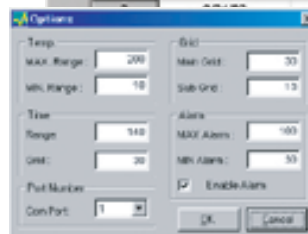
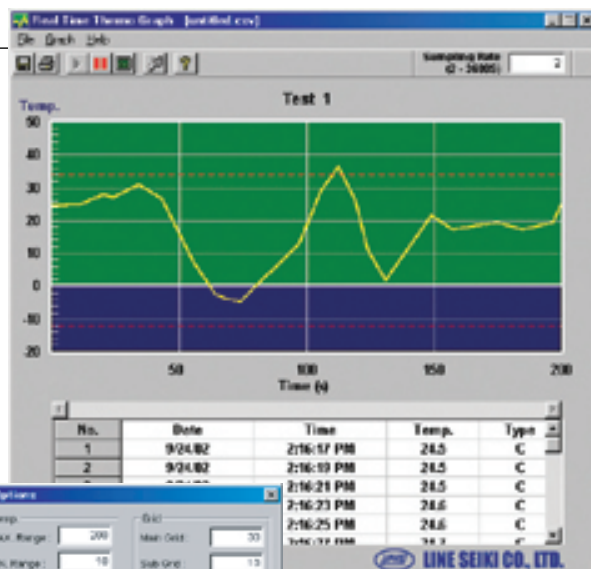


TC-950

[Software Specification]

- Max Record Data : 25,000 Data
- Sampling Time : 2 - 3,600S
- Output Data Format : CSV
- Graph customize : Graph Range Set , Alarm Value Set

USB-K VER.2	USB cable Software for TC-950 Instruction manual / PDF Software for USB driver Instruction manual
UPCB-01 VER.2	Software for TC-950 Instruction manual / PDF
USB-01	USB cable L=1230mm Software for USB driver Instruction manual



* Screen is an image.

[Minimum System Requirements]

- OS: Windows XP/VISTA/7
- VGA Display : 640 x 480
- CD-ROM drive or DVD-ROM drive
- Visual Basic 6.0 Runtime
- At least 32MB of memory

Attention

TC-950 types of thermometers are battery operated.
 If used excessively and the life span of battery is exceeded, please make sure to change the battery.



Overseas Sales Dept. 37-7, Chuo-Cho 2-Chome, Meguro-ku, Tokyo, 152-0001 Japan
 TEL:+81-3-3716-5151 □ FAX:+81-3-3710-4552
 U R L □ http://www.line.co.jp/
 E - m a i l □ webtrade@line.co.jp